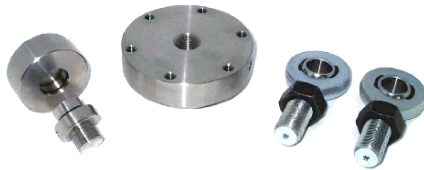
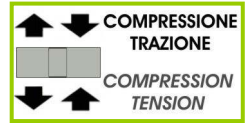


Accessori Accessories

A



WIMOD
Trasmissione **WIRELESS**
WIRELESS transmission



ACCREDIA CERTIFICATO DI TARATURA ACCREDIA
A RICHIESTA
LAT N° 093
Calibration Centre ACCREDIA Calibration Certificate
The products are NOT covered by accreditation ON REQUEST



Dimensioni Dimensions

[mm]



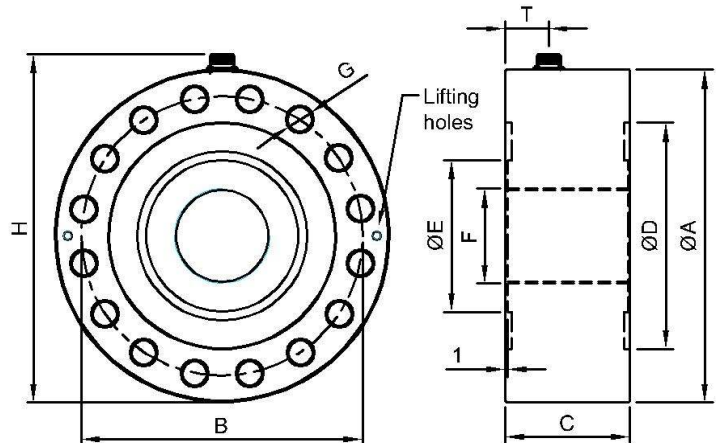
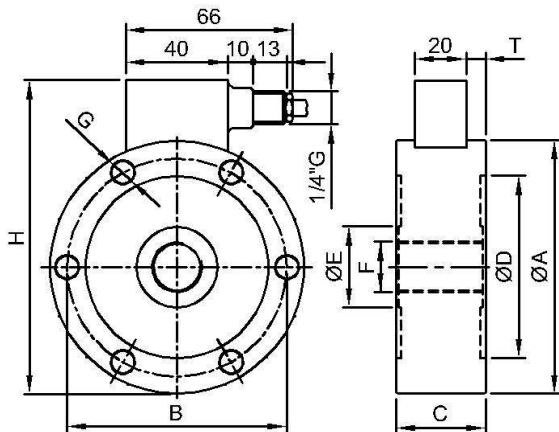
| CODE | LOAD | CODE | LOAD | ØA | B | C | ØD | ØE | F | G | n°G | H | T | KHz ⁽¹⁾ |
|--------------|----------------------|-----------------|---------------------|-----|-----|-----|-----|-----|---------|------|-----|-----|-----|--------------------|
| CTC4100500K5 | 0.5 t | CTC41005KNI15 | 5 kN | 100 | 86 | 35 | 72 | 32 | M20x1.5 | 9 | 6 | 121 | 7.5 | 2.5 |
| CTC41001T5 | 1 t | CTC410010KNI15 | 10 kN | | | | | | | | | | | 2.5 |
| CTC41002T55 | 2.5t | CTC410025KNI15 | 25 kN | | | | | | | | | | | 4.8 |
| CTC41275T5 | 5 t | CTC412750KNI15 | 50 kN | 127 | 110 | 35 | 92 | 47 | M30x2 | 10.5 | 8 | 149 | 7.5 | 3.8 |
| CTC412710T5 | 10 t | CTC4127100KNI15 | 100 kN | | | | | | | | | | | 5.8 |
| CTC416520T5 | 20 t | CTC4165200KNI15 | 200 kN | 165 | 138 | 50 | 108 | 62 | M42x3 | 17 | 12 | 188 | 15 | 5.7 |
| CTC416530T5 | 30 t | CTC4165300KNI15 | 300 kN | | | | | | | | | | | 7.3 |
| CTC416550T5 | 50 t | CTC4165500KNI15 | 500 kN | | | | | | | | | | | 9.8 |
| CTC423075T5 | 75 t | CTC4230750KNI15 | 750 kN | 230 | 185 | 80 | 145 | 98 | M60x3 | 26 | 12 | 254 | 30 | 18.2 |
| CTC4230100T5 | 100 t | CTC42301MNI15 | 1 MN | | | | | | | | | | | 18.2 |
| CTC4300200T5 | 200 t | CTC43002MNI15 | 2 MN | 300 | 250 | 100 | 198 | 132 | M100x3 | 25 | 16 | 323 | 40 | 18.0 |
| CTC4350300T5 | 300 t ⁽²⁾ | CTC43503MNI15 | 3 MN ⁽²⁾ | 350 | 294 | 120 | 238 | 160 | M100x3 | 28 | 16 | 367 | 40 | 15.7 |
| CTC4350500T5 | 500 t ⁽²⁾ | CTC43505MNI15 | 5 MN ⁽²⁾ | | | | | | | | | | | |

⁽¹⁾ Frequenza naturale / Natural frequency.

⁽²⁾ Fino a 250t in TRAZIONE / Up to 250t in TENSION.

From 5kN to 2 MN

3 MN and 5 MN



Dati Tecnici
Technical Data


| Classe di precisione: ISO 376 | Accuracy class: ISO 376 | 1 | | | | | | |
|---|---|--|-----------------|------------------|--------|---------------|--------|--|
| CARICO NOMINALE | NOMINAL LOAD | 5-10 kN 25 kN | 50 kN 100 kN | 200 kN 300 kN | 500 kN | 750kN 1 MN | 2 MN | 3 MN ⁽¹⁾ 5 MN ⁽¹⁾ |
| ERRORI RELATIVI (al valore letto) a) ripetibilità 0°-120°-240°(b) b) interpolazione (fc) c) reversibilità (u) d) zero (fo) | RELATIVE ERRORS (at reading) a) repeatability 0°-120°-240°(b) b) interpolation (fc) c) reversibility (u) d) zero (fo) | $\leq \pm 0.145\%$ ⁽²⁾ $\leq \pm 0.090\%$ ⁽²⁾ $\leq \pm 0.240\%$ ⁽²⁾ $\leq \pm 0.030\%$ F.S. | | | | | | |
| LINEARITA' ISTERESI | LINEARITY HYSTERESIS | $\leq \pm 0.05\%$ F.S. $\leq \pm 0.05\%$ F.S. | | | | | | |
| EFFETTO DELLA TEMPERATURA (10°C) a) sullo zero b) sulla sensibilità EFFETTO CARICO TRASVERSALE: a) al 10% del carico nominale | TEMPERATURE EFFECT (10°C) a) on zero b) on sensitivity EFFECT OF TRANSVERSE LOAD: a) at 10% of nominal load | $\leq \pm 0.028\%$ F.S. $\leq \pm 0.024\%$ F.S. $\leq \pm 0.030\%$ F.S. | | | | | | |
| SENSIBILITA' NOMINALE TOLLERANZA DI CALIBRAZIONE | NOMINAL SENSITIVITY SENSIVITY TOLERANCE | 2mV/V ⁽³⁾ $\leq \pm 0.1\%$ F.S. | | | | | | |
| CARICO NOMINALE RESISTENZA DI INGRESSO RESISTENZA DI USCITA | NOMINAL LOAD INPUT RESISTANCE OUTPUT RESISTANCE | 5-10-25-50-100-200-300 kN $800 \pm 20\Omega$ $705 \pm 2\Omega$ | | | | | | |
| CARICO NOMINALE RESISTENZA DI INGRESSO RESISTENZA DI USCITA | NOMINAL LOAD INPUT RESISTANCE OUTPUT RESISTANCE | 500-750-1000-2000-3000-5000 kN $430 \pm 20\Omega$ $352 \pm 2\Omega$ | | | | | | |
| RESISTENZA DI ISOLAMENTO BILANCIAMENTO DI ZERO ALIMENTAZIONE DI RIFERIMENTO ALIMENTAZIONE NOMINALE ALIMENTAZIONE MAX. | INSULATION RESISTANCE ZERO BALANCE RECOMENDED SUPPLY VOLTAGE NOMINAL SUPPLY VOLTAGE RANGE MAXIMUM SUPPLY VOLTAGE | $> 5\text{ G}\Omega$ $\leq \pm 1\%$ F.S. 10 V $1-15\text{ V}$ 18 V | | | | | | |
| VALORI MECCANICI LIMITE RIFERITI AL CARICO NOMINALE : a) carico di servizio b) carico limite c) carico di rottura d) massimo carico trasversale e) carico dinamico limite Freccia max. al carico nominale (mm) | MECHANICAL LIMIT VALUES REFERRED TO NOMINAL LOAD : a) service load b) max permissible load c) breaking load d) max transverse load e) max permissible dynamic load Displacement at nominal load (mm) | 120% 150% $>300\%$ 100% 75% ⁽⁴⁾ -0.06 -0.09 -0.17 -0.17 -0.23 -0.21 -0.21 | | | | | | |
| TEMPERATURA DI RIFERIMENTO CAMPO NOMINALE DI TEMPERATURA TEMPERATURA DI ESERCIZIO TEMPERATURA DI STOCCAGGIO | REFERENCE TEMPERATURE TEMPERATURE NOMINAL RANGE SERVICE TEMPERATURE STORAGE TEMPERATURE | $+23\text{ }^\circ\text{C}$ $-10 / +40\text{ }^\circ\text{C}$ $-10 / +70\text{ }^\circ\text{C}$ $-20 / +80\text{ }^\circ\text{C}$ | | | | | | |
| PESO (kg) CLASSE DI PROTEZIONE (EN 60529) MATERIALE DINAMOMETRO LUNGHEZZA CAVO VITI DI FISSAGGIO: a) diametro b) classe di resistenza c) coppia di serraggio | WEIGHT (kg) PROTECTION CLASS (EN 60529) EXECUTION MATERIAL CABLE LENGTH FIXING SCREWS a) diameter b) resistance class c) tightening torque | 1.60 | 2.45 | 5.80 | 6.80 | 16.5 | 35 | 63 |
| | | IP67 Acciaio Inox / Stainless Steel 5 m | | | | | | |
| | | M8 | M10 | M16 | M16 | M24 | M24 | M27 |
| | | 12.9 | 12.9 | 12.9 | 12.9 | 12.9 | 12.9 | 12.9 |
| | | 40 Nm | 70 Nm | 368 Nm | 368 Nm | 460 Nm | 460 Nm | 1500 Nm |

⁽¹⁾ Fino a **2,5 MN** in **TRAZIONE**
Up to **2,5 MN** in **TENSION**.

⁽²⁾ Errori percentuali calcolati al valore letto, min. 1/10 del carico nominale.
Percentage errors referred to reading, min. 1/10 of nominal load.

⁽³⁾ Test e calibrazioni eseguite in **COMPRESSIONE** con il dinamometro montato al supporto e viti di fissaggio correttamente serrate.
Tests and calibrations performed in **COMPRESSION** with the dynamometer mounted on a bearing support with correctly tightened clamping screws.

⁽⁴⁾ Il carico dinamico deve essere applicato al filetto centrale del dinamometro e non sulla corona esterna di fissaggio.
The dynamic load must be applied to the dynamometer central thread and not to the external fixing rim.

A richiesta calibrazioni in kg
kg calibration on request.

A richiesta classificazioni secondo **ASTM E74**
Classifications according **ASTM E74** on request.

Applicazioni Applications

| COMPRESSIONE <i>COMPRESSION</i> | TRAZIONE <i>TENSION</i> |
|--|--|
| | |
| | |
| ATTENZIONE: Verificare che le viti di fissaggio e gli accessori siano correttamente serrati. | WARNING: Check that the fixing screws and the accessories are correctly tightened. |
| Materiale accessori: da 5 a 200 kN da 300 kN a 5 MN | Acciaio inox $R_m \geq 90 \text{ kg/mm}^2$ $R_m \geq 130 \text{ kg/mm}^2$ |
| Accessories execution material: from 5 to 200 kN from 300 kN to 5 MN | Stainless Steel $R_m \geq 90 \text{ kg/mm}^2$ $R_m \geq 130 \text{ kg/mm}^2$ |

Dimensioni *Dimensions*

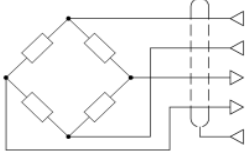
[mm]

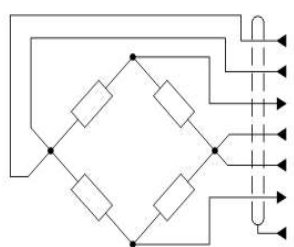


| TC4: | A | B | C | D | E | F | G | H | L | M |
|--------------|-----|-----|-----|-----|-------|-------|-------|------------|-------|-------|
| 5, 10, 25 kN | 109 | 37 | 35 | 37 | Ø 57 | Ø 100 | Ø 70 | M 20 x 1.5 | Ø 32 | ~ 170 |
| 50, 100 kN | 110 | 37 | 35 | 38 | Ø 76 | Ø 127 | Ø 100 | M 30 x 2 | Ø 47 | ~ 200 |
| 200, 300 kN | 159 | 60 | 50 | 59 | Ø 76 | Ø 165 | Ø 100 | M 42 x 3 | Ø 62 | ~ 224 |
| 500 kN | 169 | 60 | 60 | 59 | Ø 76 | Ø 165 | Ø 100 | M 42 x 3 | Ø 62 | / |
| 750 kN, 1 MN | 253 | 85 | 80 | 88 | Ø 126 | Ø 230 | Ø 180 | M 60 x 3 | Ø 98 | / |
| 2 MN | 309 | 85 | 100 | 124 | Ø 129 | Ø 300 | Ø 250 | M100 x 3 | Ø 132 | / |
| 3 MN | 384 | 120 | 120 | 144 | Ø 168 | Ø 350 | Ø 330 | M100 x 3 | Ø 160 | / |
| 5 MN | 394 | 120 | 130 | 144 | Ø 168 | Ø 350 | Ø 330 | M100 x 3 | Ø 160 | / |

| TC4: | CODE | ACCESSORIES (optional): | ACCESSORI (opzionali): |
|------------------|------------|--|---|
| 5, 10, 25 kN | CTIC22 | ① Loading head. | Testa di carico. |
| | CTC425M20 | ② Spherical loading head M20x1.5. | Testa di carico sferica M20x1.5 |
| | CPBTC4D100 | ③ Mounting plate Ø 100 mm. | Piastra base Ø 100 mm. |
| | CACCEM20 | ④ Knuckle joints. | Teste a snodo sferico. |
| 50, 100 kN | CTIC28 | ① Loading head. | Testa di carico. |
| | CTC445M30 | ② Spherical loading head M30x2. | Testa di carico sferica M30x2. |
| | CPBTC4D127 | ③ Mounting plate Ø 127 mm. | Piastra base Ø 127 mm. |
| | CACCEM30 | ④ Knuckle joints. | Teste a snodo sferico. |
| 200, 300, 500 kN | CTIC35 | ① Loading head. | Testa di carico. |
| | CTS62M42 | ② Spherical loading head M42x3 (200-300kN) | Testa di carico sferica M42x3 (200-300kN) |
| | CTC450M42 | ② Spherical loading head M42x3 | Testa di carico sferica M42x3 (500kN) |
| | CPBTC4D165 | ③ Mounting plate Ø 165 mm. | Piastra base Ø 165 mm. |
| | CACCEM42 | ④ Knuckle joints. (max 200kN) | Teste a snodo sferico. (max 200kN) |
| 750 kN, 1 MN | CTIC60 | ① Loading head. | Testa di carico. |
| | CTS96M60 | ② Spherical loading head M60x3. | Testa di carico sferica M60x3. |
| | CPBTC4D230 | ③ Mounting plate Ø 230 mm. | Piastra base Ø 230 mm. |
| 2 MN | CTIC106 | ① Loading head. | Testa di carico. |
| | TS160M100 | ② Spherical loading head M100x3 (2MN) | Testa di carico sferica M100x3 (2MN) |
| | CPBTC4D300 | ③ Mounting plate Ø 300 mm. | Piastra base Ø 300 mm. |
| 3 MN, 5 MN | CTIC140 | ① Loading head. | Testa di carico. |
| | CTS170M100 | ② Spherical loading head M100x3. | Testa di carico sferica M100x3. |
| | CPBTC4D350 | ③ Mounting plate Ø 350 mm. | Piastra base Ø 350 mm. |

Collegamenti Elettrici *Electrical Connections*

| <i>Dynamometer from 5 kN to 2 MN</i> | OUTPUT | CABLE | CAVO | MIL6M <i>(optional)</i> | MIL7M <i>(optional)</i> | DB9M <i>(optional)</i> | M12 <i>(optional)</i> |
|---|---|--|---|----------------------------------|----------------------------------|----------------------------------|----------------------------------|
|  | EXCITATION + EXCITATION - OUTPUT + OUTPUT - ----- | <i>Red Black White Yellow Shield</i> | Rosso Nero Bianco Giallo Schermo | A B D C F | C B A D E | 3 4 1 2 5 | 1 3 2 4 5 |

| <i>Dynamometer 3 MN and 5 MN</i> | OUTPUT | MIL7M | CABLE | CAVO |
|---|---|--|--|---|
|  | EXCITATION + SENSE + OUTPUT + EXCITATION - SENSE - OUTPUT - ----- | C F A B G D E | <i>Red Orange White Black Blue Yellow Shield</i> | Rosso Arancione Bianco Nero Blu Giallo Schermo |

Cavo schermato PVC 105°C, Ø5.2mm a 4x Ø0.35mm² o 6x Ø0.25mm² conduttori stagnati.
Schermo collegato al corpo del dinamometro.

*PVC 105°C shielded cable, Ø5.2mm with 4x Ø0.35mm² or 6x Ø0.25mm² tinned conductors.
Shield connected to the body of the dynamometer.*

AEP

transducers



Dasa-Rägister
EN ISO 9001:2008
IQ-1100-01



LAT N° 093
Calibration Centre
The products are NOT
covered by accreditation



**Production Quality
Assurance Certified n°
TÜV 06 ATEX 553793 Q**

41126 Cognento (MODENA) Italy Via Bottego 33/A Tel:+39-(0)59-346441 Fax:+39-(0)59-346437 E-mail: aep@aep.it

Al fine di migliorare le prestazioni tecniche del prodotto, la società si riserva di apportare variazioni senza preavviso.
In order to improve the technical performances of the product, the company reserves the right to make any change without notice.